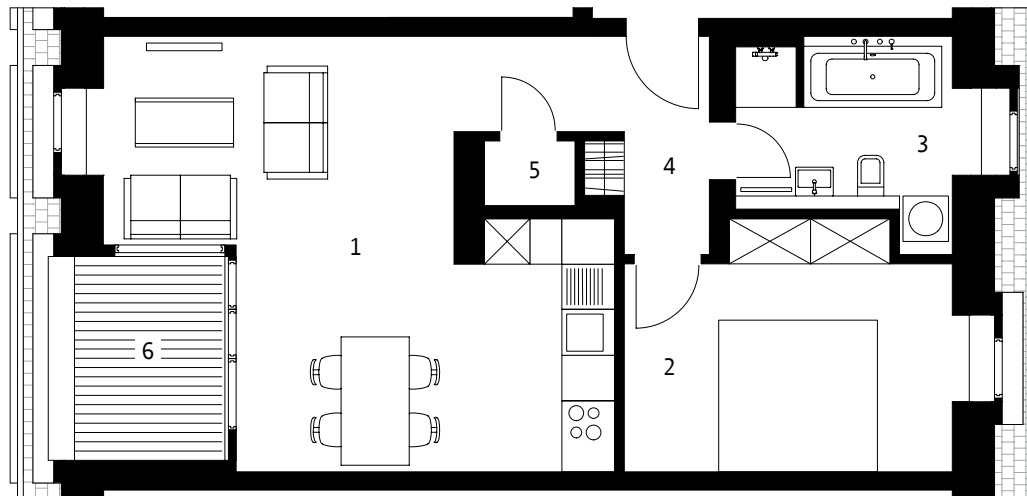
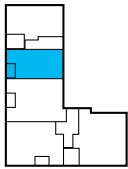
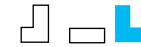


DG



WOHNUNG 68

2 ZIMMER

1 ZIMMER	32,06 M ²
2 ZIMMER	12,82 M ²
3 BAD	6,68 M ²
4 FLUR	2,21 M ²
5 ABSTELLKAMMER	1,02 M ²
6 LOGGIA	5,40 M ²

WOHNFLÄCHE 57,49 M²

BALKON- UND TERRASSENFLÄCHEN ZU 50% BERÜCKSICHTIGT



MASSSTAB 1:100

