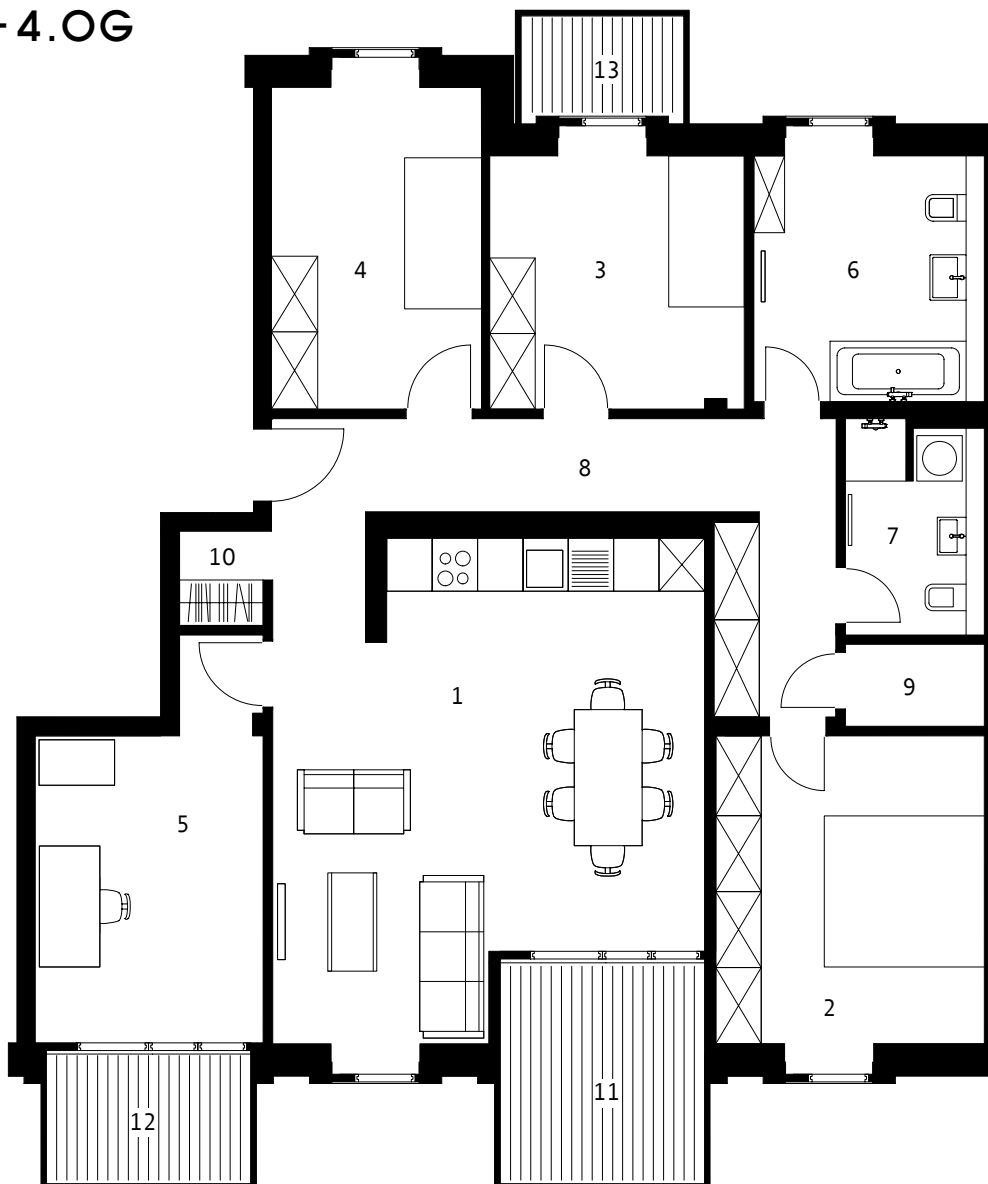
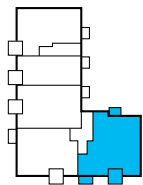


1.-4.OG



WOHNUNG 45, 50, 55, 60

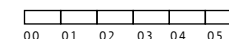
5 ZIMMER

| | |
|------------------|----------------------|
| 1 ZIMMER | 37,45 M ² |
| 2 ZIMMER | 14,75 M ² |
| 3 ZIMMER | 12,10 M ² |
| 4 ZIMMER | 11,83 M ² |
| 5 ZIMMER | 13,56 M ² |
| 6 BAD | 10,21 M ² |
| 7 WC/DUSCHE | 5,01 M ² |
| 8 FLUR | 11,95 M ² |
| 9 ABSTELLKAMMER | 2,07 M ² |
| 10 GARDEROBE | 1,43 M ² |
| 11 LOGGIA | 7,12 M ² |
| 12 BALKON VORN | 4,77 M ² |
| 13 BALKON HINTEN | 3,09 M ² |

WOHNFLÄCHE 127,85 M²



MASSSTAB 1 : 100



BALKON- UND TERRASSENFLÄCHEN ZU 50% BERÜCKSICHTIGT